

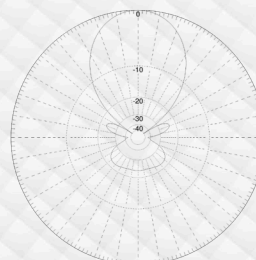
DIRU-110/7C8A

YAGI DIRECTIONAL ANTENNA UHF WITH 7 ELEMENTS

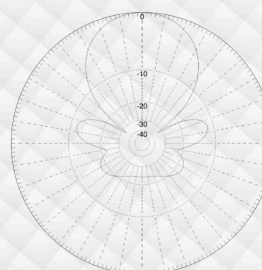
High gain YAGI type directional antenna, made of special aluminum alloy, with excellent mechanical strength and high electrical conductivity.

The antenna was designed to prevent the build-up of electrostatic charges on the coaxial cable. This feature allows for greater protection of the equipment and a reduction in noise levels, allowing for optimal reception of distant signals.

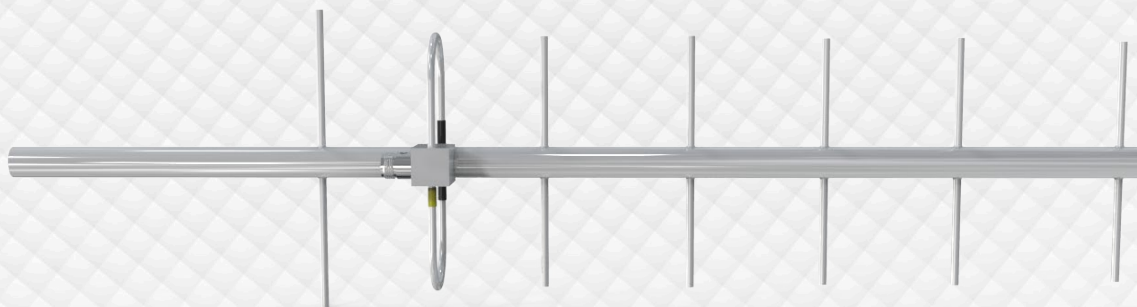
In addition to being lightweight and easy to install, it requires no field adjustment so that its VSWR remains below 1,5:1 over the entire operating frequency range.



Horizontal polarization



Vertical polarization



Partnumber	Model	Range
504320	DIRU-110/7C8A	824 / 894 MHz

ELECTRICAL SPECIFICATIONS	
VSWR	$\leq 1,5 : 1$
Polarization	Vertical / Horizontal
Nominal impedance	50 Ω
Maximum power	120 Watts
Revenue	10 dBi
Coast-front relationship	≥ 20 dB
$\frac{1}{2}$ power angle	Horizontal 849 MHz 47°
$\frac{1}{2}$ power angle	Vertical 849 MHz 52°
Connector	N female
Lightning protection	Grounded elements

MECHANICAL SPECIFICATIONS	
Broad	186 mm
Total length	688 mm
Weight	0,635 Kg
Finish	White epoxy paint
Fixing	Metal tube 30 mm
Wind exposure area	0,0813 m ²
Basic material	Aluminum
Wind of operation	≥ 110 Km/h
Wind of survival	≥ 200 Km/h